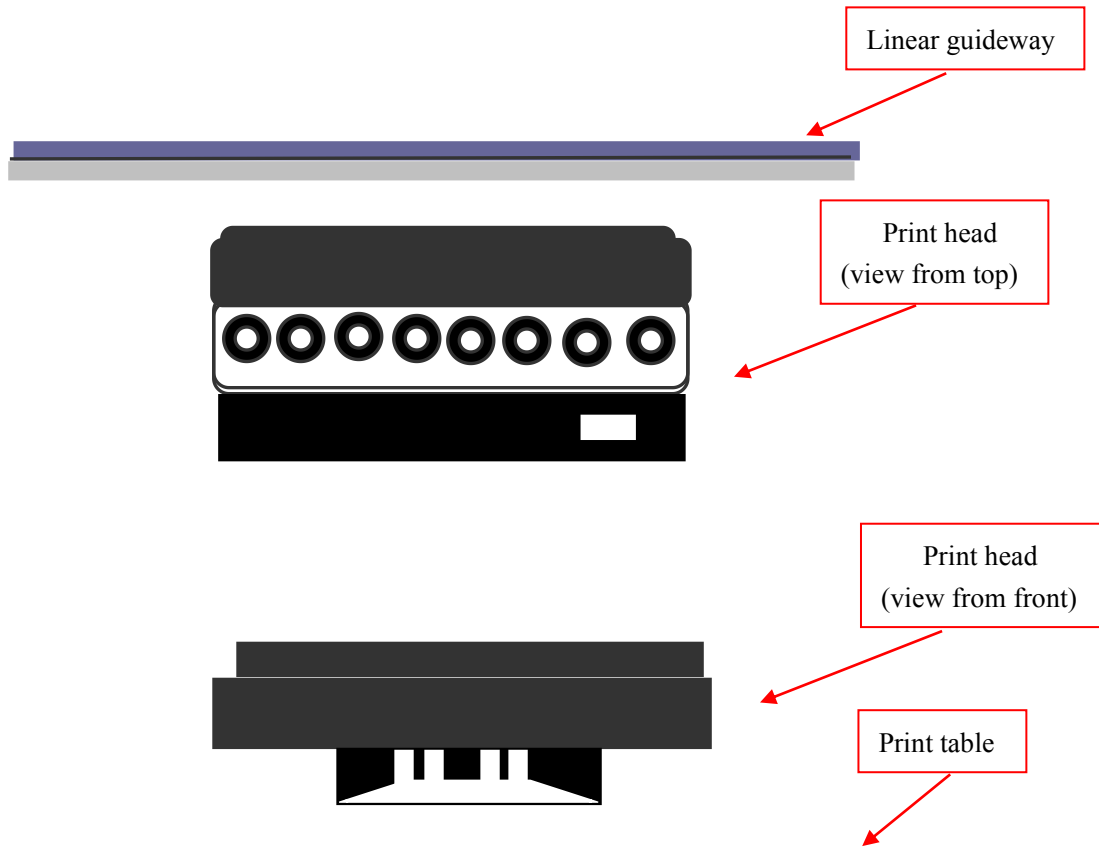


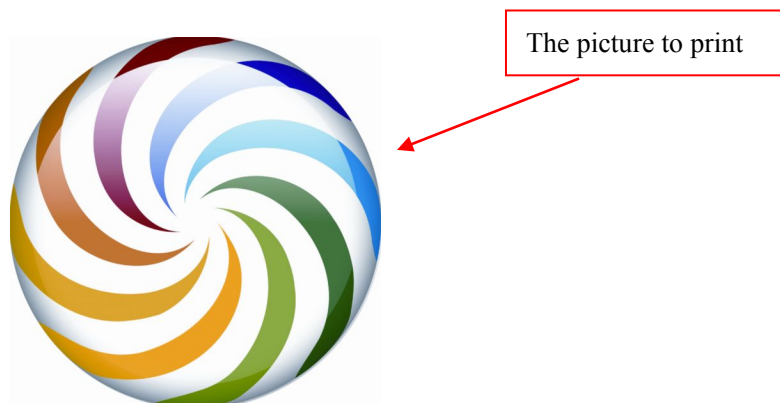
# NC-UV0406 Printer

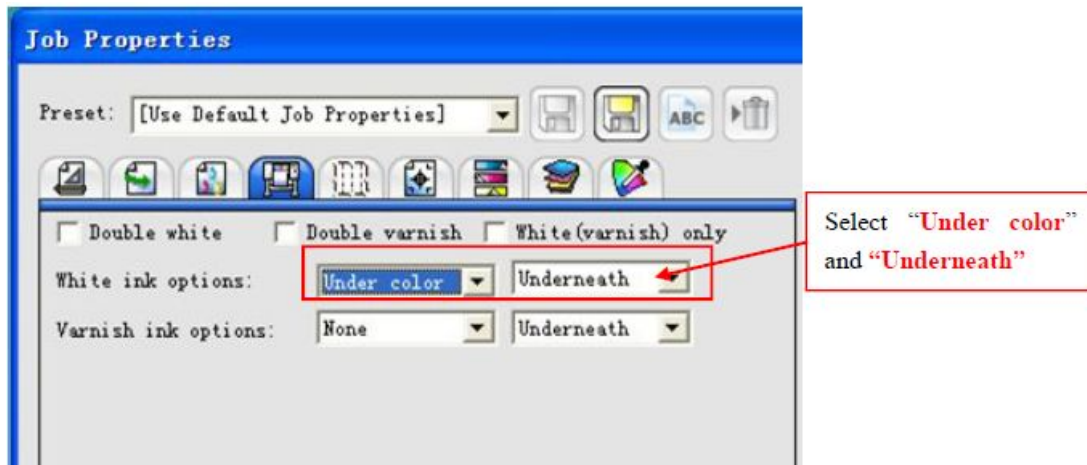
## Print Head Physical Alignment

1. Print head alignment is to ensure print head position is paralleled with linear guideway and print table, so that white ink and color ink can be printed at same location



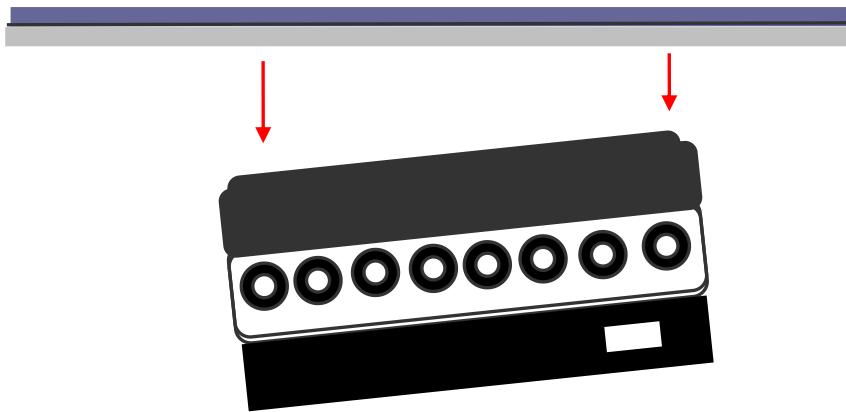
2. If the print head is not in either of paralleled positions, when white ink and color ink are printed together, there will be some white-ink profile uncovered by color ink. As below are the cases of print result.



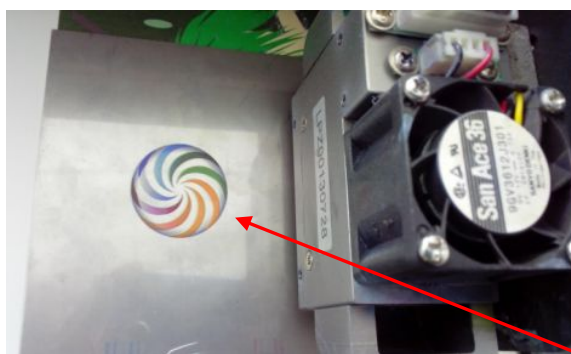


- ❖ The print mode to select: white (“under color”) + color ink (underneath)

## 2.1 Case-1 of print head position Vertically:



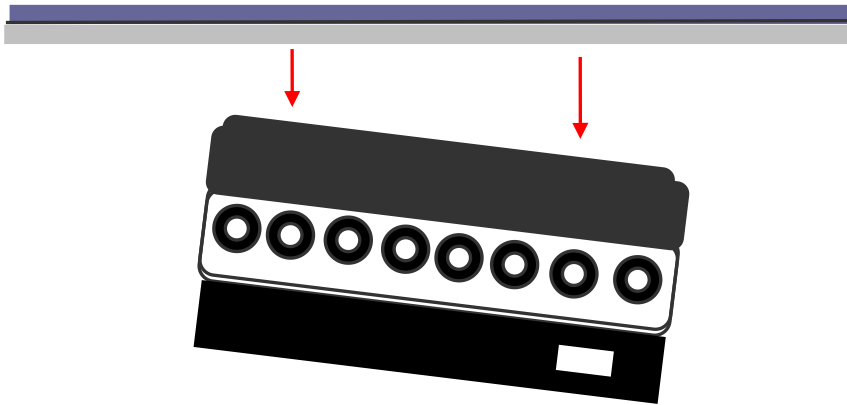
### Print result-1:



White ink uncovered (upwards)



## 2.2 Case-2 of print head position vertically:



### Print result-2



White ink uncovered (downwards)

### ❖ *How to solve the vertical problems?*



Here is the plate to locate print head, which is fixed by 4 screws.

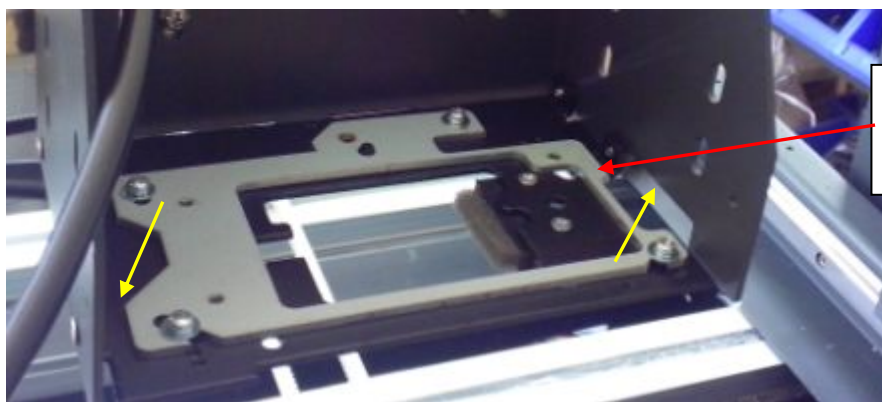
❖ After loose the screws then you can readjust the position of the plate.

## Solution for case-1



Adjust the plate clockwise

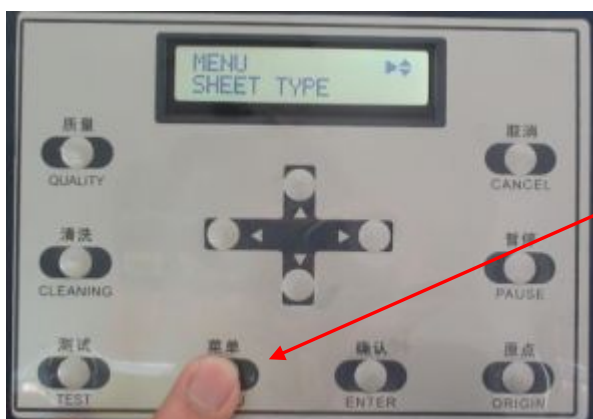
## Solution for case-2



Adjust the plate anticlockwise

## ❖ Print Head Vertical Test

To make sure the plate position is already adjusted correctly. Print head vertical Test is suggested to perform. As below are the steps to make Print Head Vertical Test by control panel.



1st. Enter "Menu" on control panel



2nd. Press button  
“Down” to find  
“HEAD ADJUST”



3rd. Press button  
“Right” to enter item  
“HEAD ADJUST”



4th. Press button  
“Down” to find  
“VERTICAL”



5th. Press button  
“Right” to enter  
“VERTICAL”





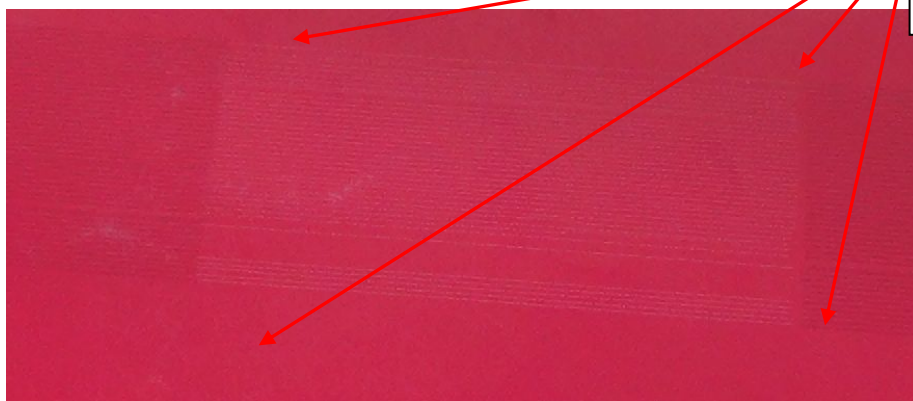
6th. Press button "Enter" to make test print

Suggest use light color paper to make vertical test print, because the test print pattern is Black+White+Black. (as below)



Print head and carriage is in here this location

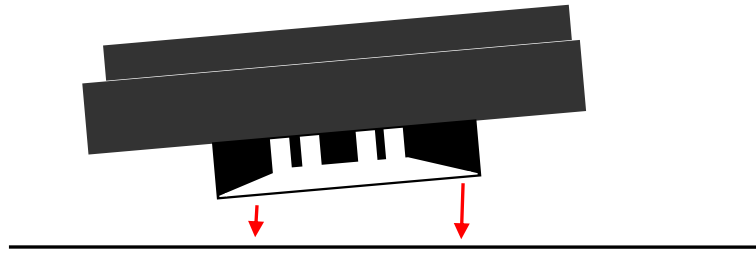
When the black patterns and white pattern is aligned continually, it means the print head vertical position is in proper condition.



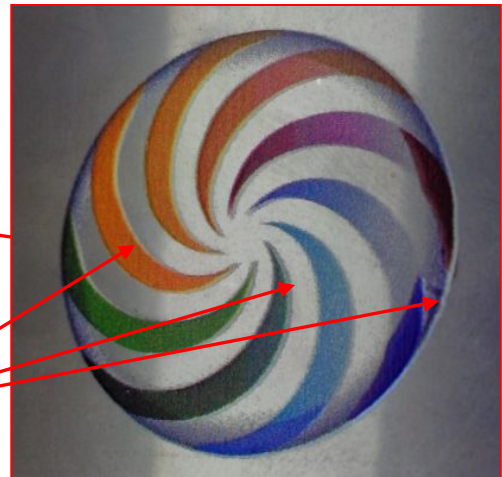
6th. Press button "Enter" to make test print

However, if the white pattern is upwards higher than black patterns, then it is the problem of "**Case-1 of print head position vertically**". On contrary, if the white pattern is downwards lower than black patterns, it is the problem of "**Case-2 of print head position vertically**"

### 2.3 Case-3 of print head position horizontally:

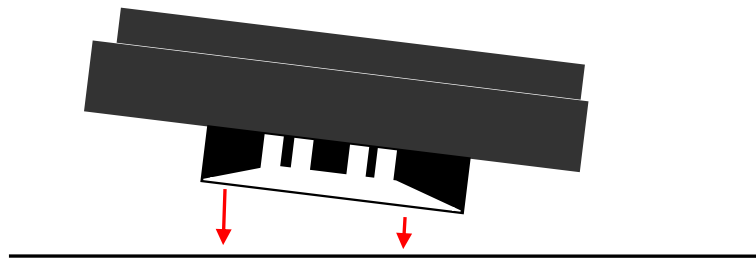


#### Print result -3

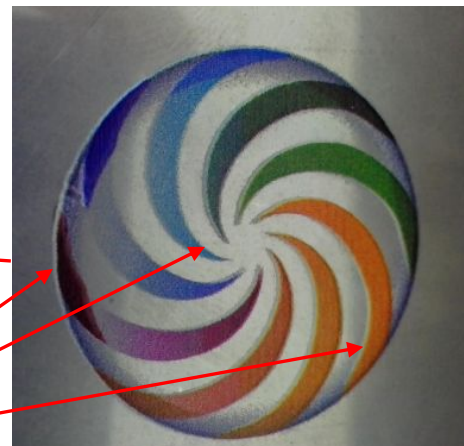


White ink uncovered (rightwards)

### 2.4 Case -4 of print head position horizontally:

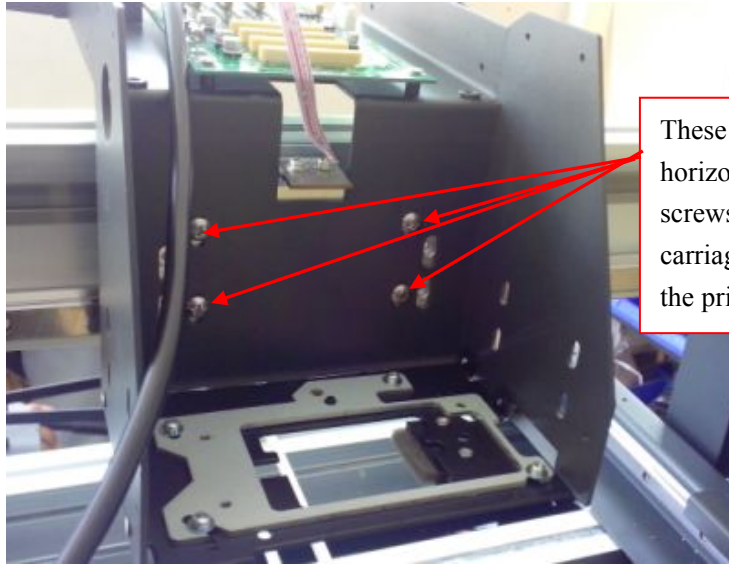


#### Print result -4:

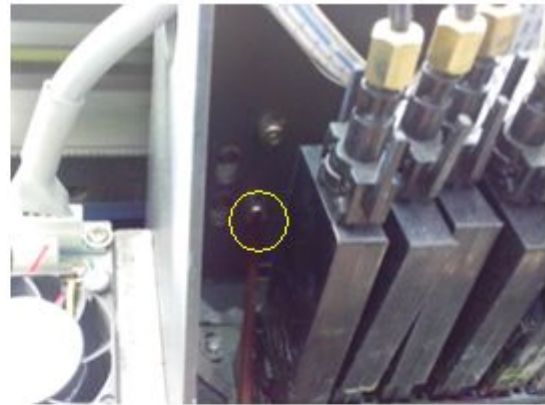
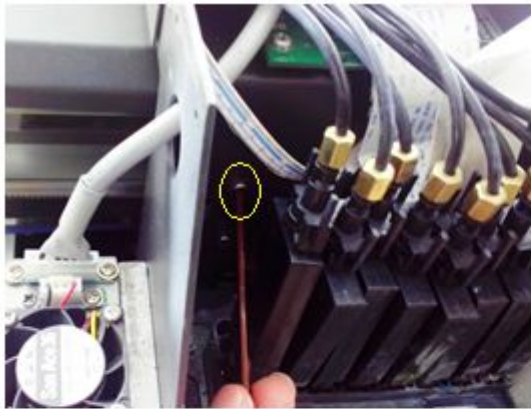


White ink uncovered (leftwards)

## *How to solve the horizontal problem?*



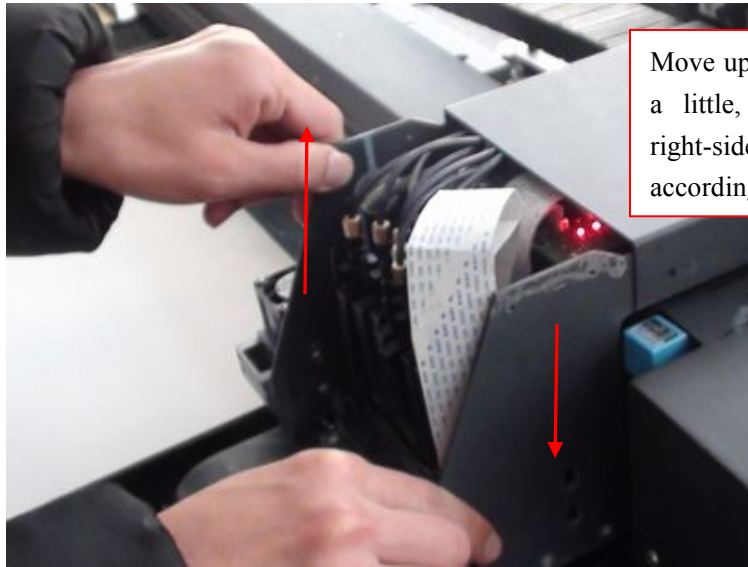
These 4 screws fix the carriage horizontal position. Loose these screws, then you can adjust the carriage horizontal position (same as the print head horizontal position)



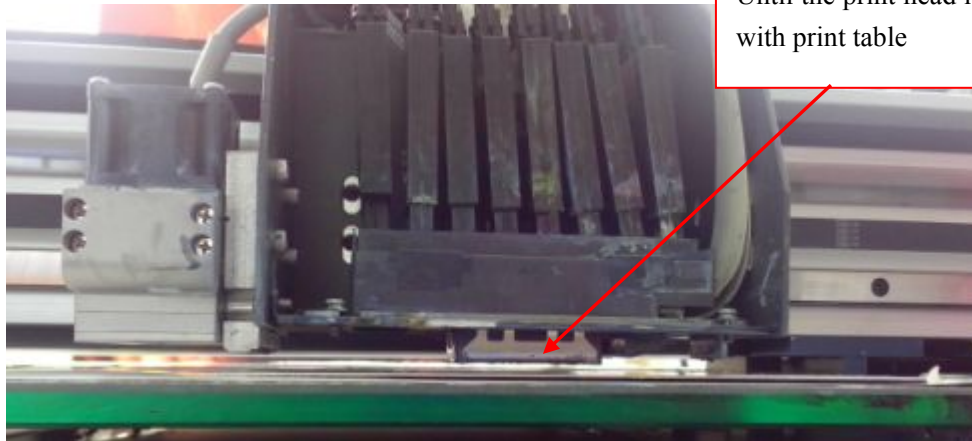
- ❖ After loose the screws, you can adjust the carriage horizontal position.



### Solution for case-3:



Move up the left-side of carriage a little, and lower down the right-side of carriage a little accordingly



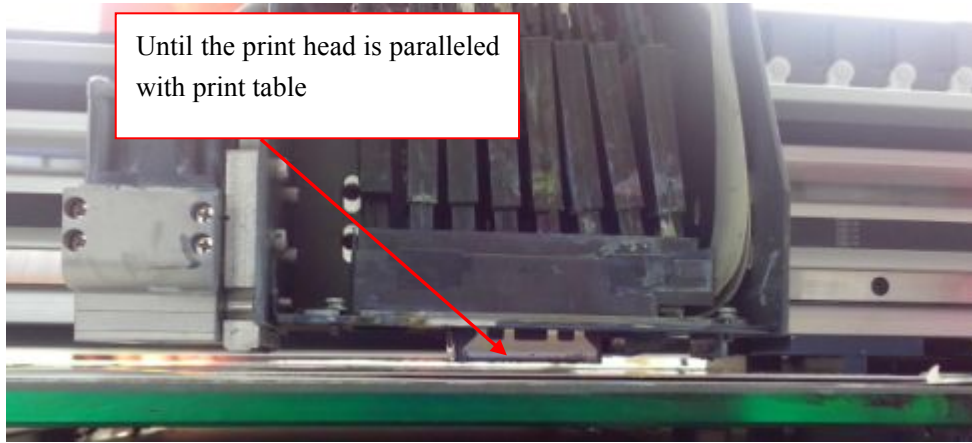
Until the print head is paralleled with print table

### Solution for case -4:



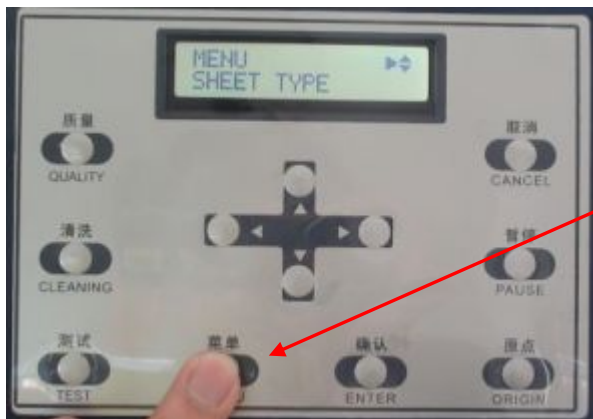
Move up the right-side of carriage a little, and lower down the left-side of carriage a little accordingly





### ❖ Print Head Horizontal Test

To make sure the print head is paralleled with print table. Print head horizontal Test is suggested to perform. As below are the steps to make Print Head Horizontal Test by control panel.





3rd. Press button  
“Right” to enter item  
“HEAD ADJUST”



4th. Press button  
“Right” to enter  
“HORIZONTAL”



6th. Press button  
“Enter” to make  
test print

Then comes the below print pattern. There 3 columns of patterns, Y, M, C. When the 3 columns of patterns are aligned straightly. Then the print head is in proper horizontal position.

